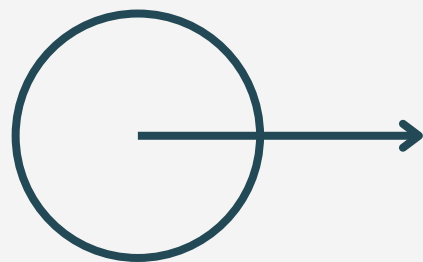




SMUDGE EPISODE 2

4-7 GUIDE

Integrating SEL, ELA, and Creative Expression



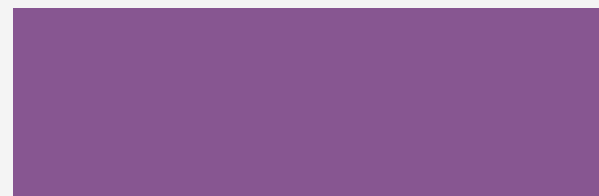


OVERVIEW

In this episode, Smudge faces the Inkling Society after their attempt to add "The Brave Teapot" to the World Book, a living archive of stories that have shaped humanity. Through a powerful lesson in storytelling and responsibility, the authors explain the origins of the World Book and its influence. Smudge learns about the delicate balance of creativity and caution and is sent on an unexpected journey into the "Unfiniverse," the realm of unfinished stories.

Key Themes

- The Influence of Stories: Stories have the power to inspire, unite, and shape the world, but they must be crafted thoughtfully.
- Imagination as a Force of Creation: Imagination is portrayed as a tool that brings stories to life and defines our understanding of the world.
- The Complexity of Collaboration: The authors' differing perspectives highlight the challenges and benefits of working together on a shared mission.





LEARNING PATHS

With our comprehensive set of resources, teachers can focus on three key paths to maximize engagement with Smudge Episode 2:

1

ELA

- Focus: Strengthen understanding of story structure, character analysis, and symbolism through engaging narrative activities.

2

SEL

- Focus: Develop students' self-confidence, resilience, and empathy by connecting them to Smudge's journey and challenges.

3

Creative Expression

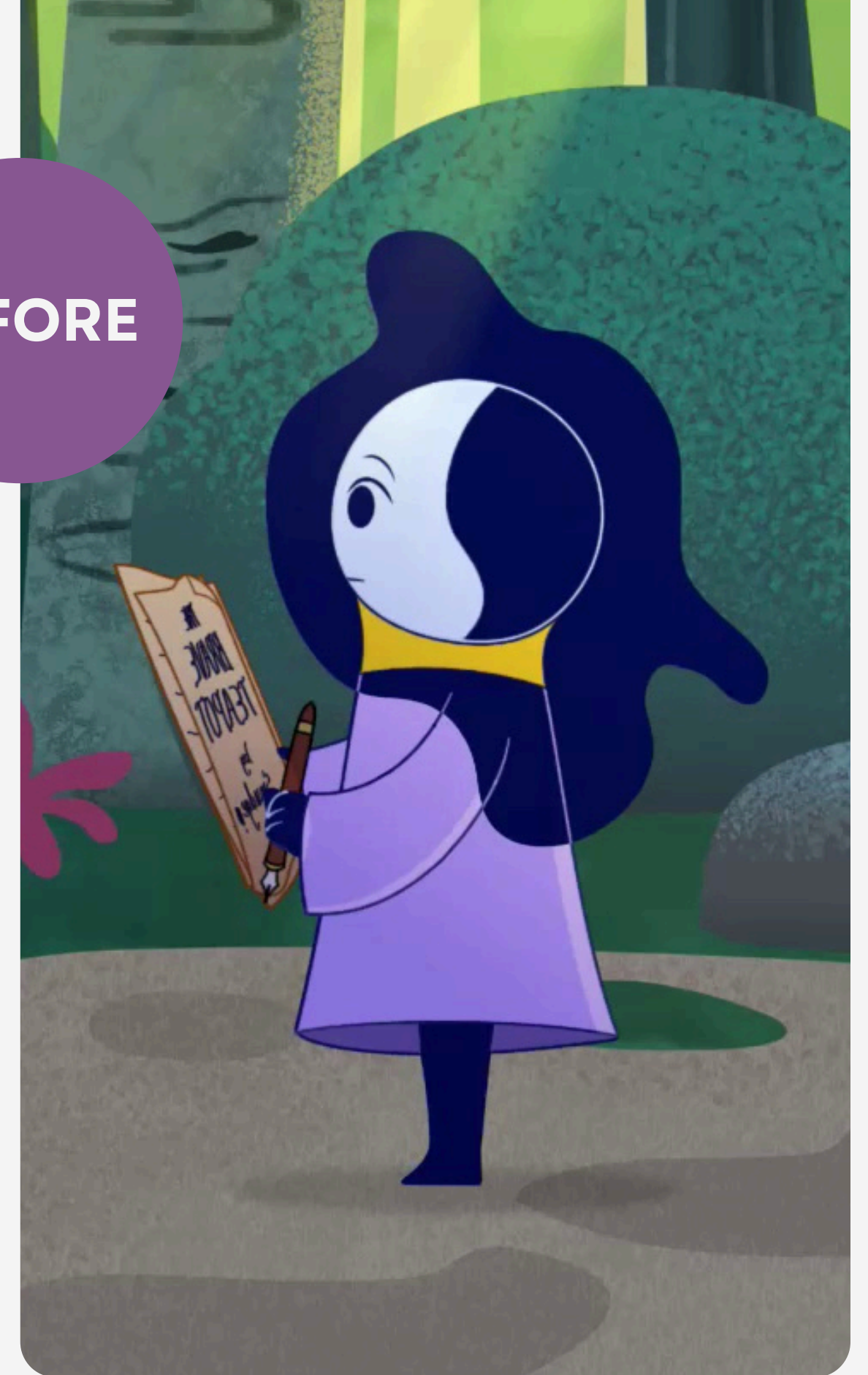
- Focus: Encourage visual storytelling and imaginative thinking as students interpret and expand on Smudge's world.

PRE-WATCH DISCUSSION

These questions encourage students to actively listen for key literary elements, identify story themes, and reflect on character motivations, sparking discussions on creativity, storytelling, and perseverance.

Prompts:

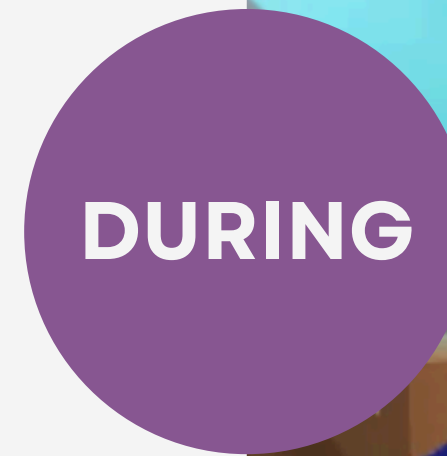
- Why do you think stories are important to people and cultures around the world?
- Have you ever had an idea that others didn't believe in? How did you handle it?
- If you could add a story to a magical book, what would it be about?



DURING-WATCH DISCUSSION

Prompts:

- Scene: Smudge Defends Their Story
 - How does this scene show the importance of believing in your ideas?
- Scene: The Origins of the World Book
 - Why do you think the authors are so cautious about which stories are added to the World Book?
- Scene: The Parlor of Passages
 - What do you think might happen if someone walked into a story without knowing the plot?

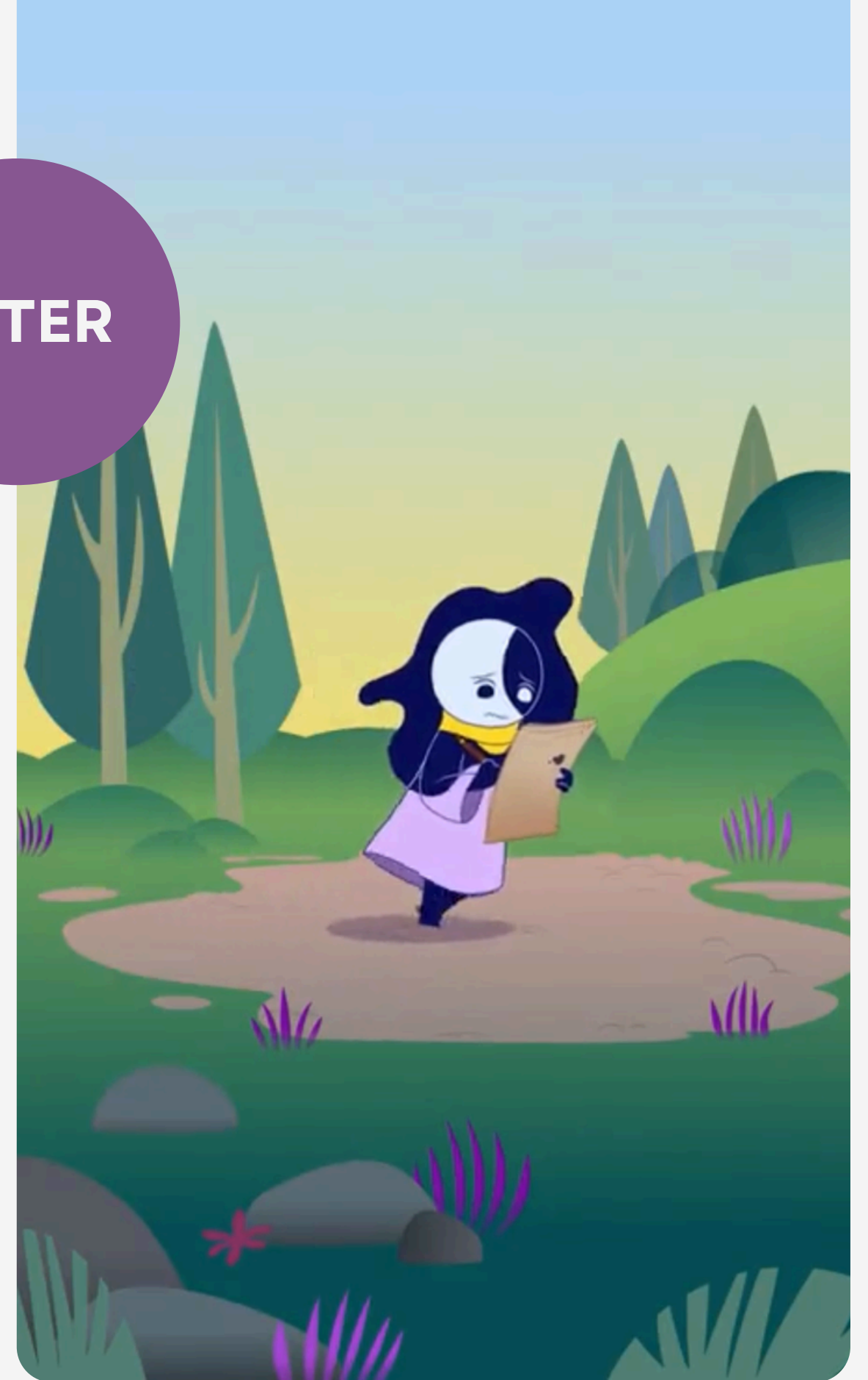


POST-WATCH DISCUSSION

Prompts:

- How does Smudge's curiosity both help and challenge them in this episode?
- Why do you think the authors are so strict about protecting the World Book?
- If you could explore the "Parlor of Passages," what kind of story would you want to step into, and why?

AFTER



CHARACTER PROFILES



- **Smudge:** A bold and imaginative writer whose curiosity often lands them in trouble but also drives their growth
- **Edgar:** A compassionate and wise author who believes in Smudge's potential despite their mistakes.
- **Wendell:** A strict and authoritative member of the Society, focused on rules and tradition.
- **Clarissa:** A meticulous and skeptical author who values order and protocol.
- **Aziz:** A pragmatic and cautious storyteller who emphasizes the consequences of reckless creativity.

PLOT BREAKDOWN



- **Introduction:** Smudge finds themselves in hot water with the Inklings Society, a prestigious group of authors tasked with safeguarding the World Book. They are accused of breaking the rules and potentially endangering the balance of storytelling by trying to add their whimsical tale.
- **Conflict:** The authors explain the World Book's origins, revealing its dual role as a source of inspiration and a potential danger. They debate whether Smudge's story belongs, underscoring the tension between creativity and tradition. Smudge defends their actions, challenging the rigid rules of the Society.
- **Climax:** Edgar leads Smudge into the "Parlor of Passages," a realm of doors that open into the worlds of every story held within the World Book. Smudge's curiosity gets the better of them, creating chaos when they open a door without understanding the risks. Edgar introduces the "Unfiniverse," a mysterious realm where incomplete stories dwell.
- **Resolution:** Smudge is sent into the "Unfiniverse" while Edgar completes his current story, with the promise of creating one for Smudge. As Smudge is pulled into the swirling nexus of unfinished stories, they are left to face a world of uncertainty.

MIDDLE GRADE ELA RESOURCES

Name: _____ Date: _____

Smudge's Plot Mapping

The story is full of exciting events! Let's explore how it all comes together. Follow the prompts to map out the plot in detail.

Exposition: Where and when does the story take place?

Rising Action: What important events happen leading to the climax?

Climax: What is the turning point of the story?

Falling Action: What happens after the climax?

Resolution: How does the story end?

STORY MAPPING

Organize the main parts of a story.

Name: _____ Date: _____

Character Analysis

Explore the personalities, motivations, and thematic roles of the characters. Choose one character from the episode and answer the questions below. Use examples from the story to support your answers.

Part 1: Understanding the Character's Goal
Who is and what is this character's main goal in the story?

Part 2: Identifying Traits and Providing Evidence
List three traits this character shows. Provide an example for each trait.

1. Trait: _____
a. Example: _____

2. Trait: _____
a. Example: _____

3. Trait: _____
a. Example: _____

Part 3: Connecting to Themes
How does this character contribute to the story's theme of imagination or rules?

CHARACTERS

Explore the traits, motivations, and actions behind characters.

Name: _____ Date: _____

Story Ingredient Shuffle

Every great story has a mix of exciting characters, settings, conflicts, and surprises! Use the ingredients below to craft a new fun and imaginative story.

Step 1: Pick a Character

- The brave teapot
- Smudge
- Edgar
- Or Create your own

Choice: _____

Step 2: Choose a Setting

- A floating castle
- A mysterious forest
- A futuristic space station
- Or create your own

Choice: _____

Step 3: Add a Conflict

- They must find a missing key.
- They are racing against the clock.
- They unleashed a magical curse.
- Or create your own

Choice: _____

Step 4: Add a Conflict

- They must find a missing key.
- They are racing against the clock.
- They unleashed a magical curse.
- Or create your own

Choice: _____

Step 5: Brainstorm Your Story: Use the prompts below to map out your story.

Introduction: Who is your character? Where are they? What is happening when the story begins?

Rising Action: What problem does your character face? How do they try to solve it?

STORY SHUFFLE

Explore how the story would change with different prompts.

MIDDLE GRADE CREATIVE RESOURCES

LET'S DRAW!


Step-by-step guide.



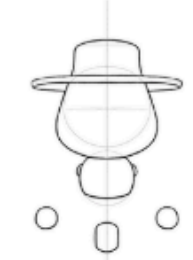
Name: _____ Date: _____

LET'S DRAW!

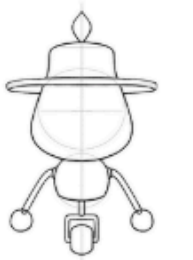
Grab a separate sheet of paper and discover the art of drawing with these simple steps!




Step 1
Sketch an oval for the head, a circle for the body, and a smaller circle for the base. Add a light oval for the hat.



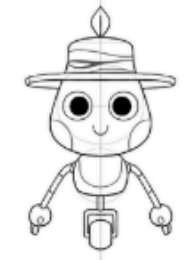
Step 2
Refine the hat by shaping the brim and adding the top. Sketch placeholders for two arms and a rectangular base below the body.



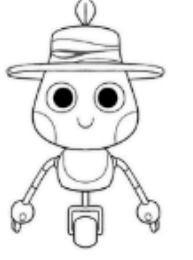
Step 3
Define the arms by connecting small circles to the body with curved lines. Add a rectangle to connect the wheel.



Step 4
Add facial features: large circles for eyes, pupils, and a small curved smile. Shape the hat.



Step 5
Add wavy lines on the hat for decoration and curved blush marks on the cheeks.




Step 5
Darken outlines, refine all details, and erase unnecessary guidelines!

Name: _____ Date: _____

Design Your Door

Imagine you're in the Parlor of Passages, where every door leads to a different story. Create your own magical door then answer the questions below.



Part 2: The Story Behind the Door

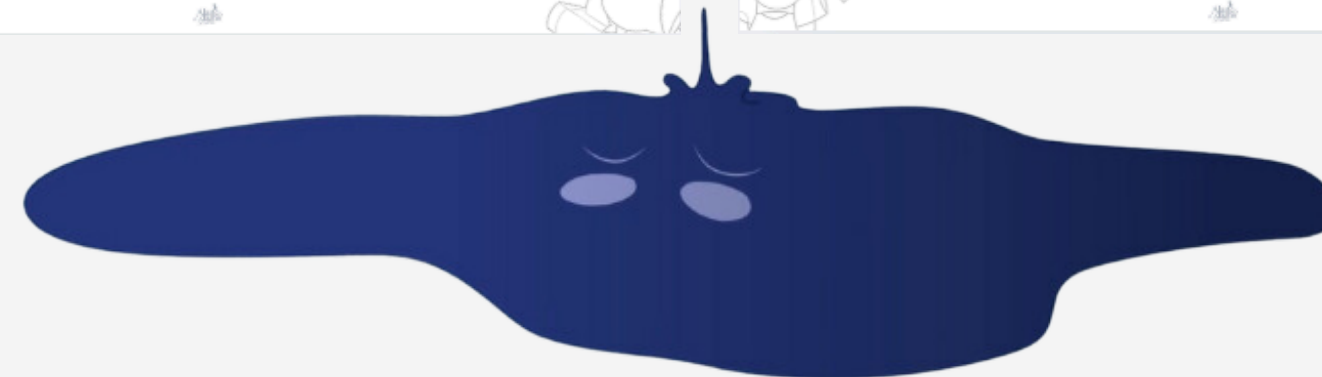
1. What kind of world does the door lead to?

2. Who is the main character in this story?

3. What is the main conflict in the story?

CREATE A DOOR

Create a door and then write about where it leads.

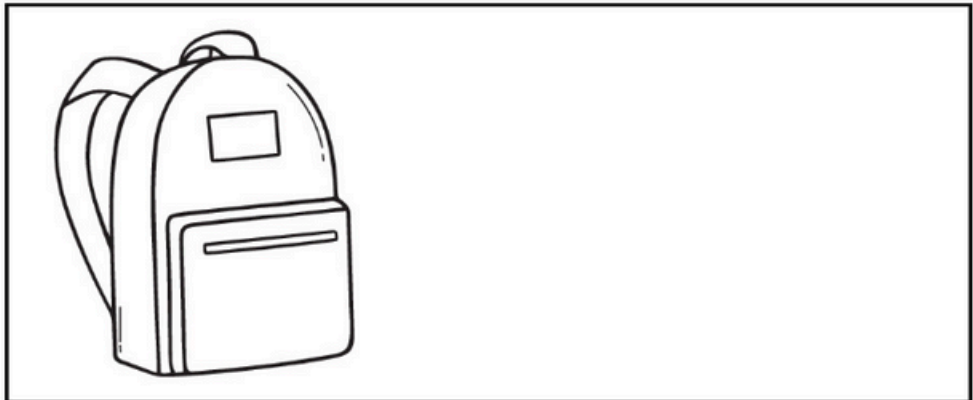


ADDITIONAL ELA CHARACTER RESOURCES

Name: _____ Date: _____

What's In The Backpack?

Think about what a character in your story would carry in their backpack. Draw and label each item, then describe why each item is important and how it shows something about their personality.



Item 1: _____
Description of why it's important: _____

How it reveals the character's personality: _____

Item 2: _____
Description of why it's important: _____

How it reveals the character's personality: _____

Name: _____ Date: _____

Character Spy Kit

You are a secret agent on a mission to discover the most interesting details about a character in your future story! Create a "Spy Profile" by filling out the information below.

Name of character you're observing: _____

Spy Profile Section 1: Physical Appearance

- Hair color and style: _____
- Eye color: _____ Height: _____
- Any special features (scar, freckles, etc.): _____

Spy Profile Section 2: Personality Quirks

What makes this character unique? List two or three interesting personality traits.

Spy Profile Section 3: Goals and Motivations

What drives this character?

- Main Goal: _____
- Why is this important?: _____

Spy Profile Section 4: Secrets

What secrets does this character keep?: _____

Name: _____ Date: _____

Story Elements: Characters

Fill in three personality traits for each of the following types of characters:

Protagonist (Hero) _____

Antagonist (Villain) _____

Sidekick _____

Using the personality traits above, complete the following prompts to create a backstory for a protagonist:

Where are they from? _____

What is their biggest fear? _____

What do they want most in life? _____

What secret are they hiding? _____



ADDITIONAL ELA SETTING RESOURCES

Name: _____

Date: _____

Setting: Create a Comic Strip

Imagine how the setting in a story changes as the plot progresses. Draw a four-panel comic strip, showing how the setting looks at different points in the story. In each panel, add a short caption to explain how the setting feels and how it affects the mood of the story at that point.

--	--

--	--

--	--

--	--

--	--

Name: _____

Date: _____

Setting: Recipe Card

Think about a future story setting and imagine it as a recipe. List the "ingredients" you'd need to create this setting. Then, write a "recipe" for putting these ingredients together, describing how they work together to build the setting's mood.

Setting Name (e.g. Mysterious Forrest): _____

Ingredients List

List the ingredients that make up this setting, using descriptive language (e.g., 2 cups of fog, 1 tablespoon of silence, a pinch of moonlight).

1. _____
2. _____
3. _____
4. _____
5. _____

Write a few sentences explaining how to "combine" the ingredients. Describe how the setting should feel and look.

How does this setting affect the characters or story?



ADDITIONAL ELA CONFLICT RESOURCES

Name: _____ Date: _____

Conflict Swap

Think about a conflict from a story or movie you know well. Imagine if this conflict were swapped for a different type of conflict. How would the story change?

Original Conflict Information

Story/ Movie Title: _____

Conflict Type: (circle one)

Character vs. Character Character vs. Nature. Character vs. Self

Character vs. Society Character vs. Technology Character vs. Supernatural

Description of Original Conflict: _____

Conflict Swap

New Conflict Type:(Circle one that is different from above)

Character vs. Character Character vs. Nature. Character vs. Self

Character vs. Society Character vs. Technology Character vs. Supernatural


Imagine how the story/ movie might play out with this new conflict. Write a short story that shows the swapped conflict.

Name: _____ Date: _____

Conflict Dice Roll

Roll a dice to discover the type of conflict you'll explore! Each number represents a different kind of conflict. Use the guide below to see what each number represents.

- Roll a 1: Character vs. Character
- Roll a 2: Character vs. Nature
- Roll a 3: Character vs. Society
- Roll a 4: Character vs. Self
- Roll a 5: Character vs. Technology
- Roll a 6: Character vs. Supernatural



Roll Result: _____

Write Your Story

Using the type of conflict you rolled, write a short story below that describes the conflict. Include details that show what is at stake for the character(s) and how the conflict affects them.

How did this type of conflict change how the character acted?

Name: _____ Date: _____

Conflict: Create a Comic Strip

Think of a conflict in a story you know, or create a new one. In the comic strip boxes below, show how the conflict unfolds and how it is resolved. Use dialogue and captions to describe each character's actions and how they lead to a resolution.

_____	_____
_____	_____
_____	_____
_____	_____
_____	_____
_____	_____
_____	_____
_____	_____
_____	_____
_____	_____

