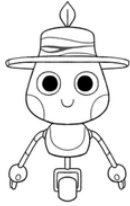


Name: _____

Date: _____

THAT'S SO PUNNY!

Smudge's journal is full of puns! Puns are jokes that use words that sound similar or have more than one meaning. Can you match the setup (first part) and payoff (second part) of these puns? Draw a line to connect the right setup to its payoff.!



THE SETUPS

- How does a dog stop a movie?
- Why does the baker sell bread?
- Can February March?
- What does a clock do if it's hungry?
- Why can't cheetahs hide?
- What key unlocks a banana?
- What do you call a sleeping cow?
- Why was the pepper cold?
- How do you stop a rhino from charging?
- Why did the cookie go to the doctor?
- What do you call a fake noodle?
- Why did the bicycle need a nap?
- What do you call an alligator in a vest?



THE PAYOFFS

- With a mon-key!
- It was two-tired!
- It goes back for seconds!
- An impasta!
- They are always spotted!
- He puts it on paws!
- It felt crummy!
- No, but April May!
- An in-vest-i-gator!
- He kneaded dough!
- A bull-dozer!
- Take away its credit card!
- It was chili!

Choose one of your favorites and draw a picture to explain it on the next page!

THAT'S SO PUNNY!

I chose this pun to draw: _____
