

Name: _____

Date: _____

COMPREHENSION QUESTIONS

Directions: Answer each question using complete sentences. Use evidence from the episode to support your answers.

1 What does the Weaver say the Archive was built to do? Use her exact words if you remember them.

2 Describe Calumbra's full origin story as told by the Weaver. Include: what the author was like, what he did, what happened to Calumbra, and what the Inking Society did about it.

3 The Weaver calls Calumbra 'a parasite of imagination itself.' What does a parasite do? Why is this description specific and serious?

4 What will happen if Calumbra finishes his manuscript and becomes complete? Why is that a danger to the world above?

5 Why does the Weaver tell the Inkompletes to go 'quickly now'? What interrupts her?

6 The episode opens with two authors. What do they say? What are they afraid of?

7 Who arrives at the very end of the episode? What does their first line tell us about whether they are expected?

8 **BONUS:** Based on everything in this episode, what do you think Calumbra's ultimate goal is beyond just becoming complete? Support your answer with at least two details.

Name: _____

Date: _____

CLAIM AND EVIDENCE

Directions: Good analysts support their ideas with specific evidence. For each claim below, find specific evidence from the episode. Then write a fourth claim of your own.

Claim 1: Calumbra's origin makes him a tragic villain, one we can understand even if we do not agree with his actions.

Evidence from the episode:

Claim 2: The stakes in Episode 5 are higher than in Episode 4.

Evidence from the episode:

Claim 3: The Weaver is on the Inkompletes' side, even though she seems cold and abrupt.

Evidence from the episode:

Your own claim:

Evidence that supports your claim:



Name: _____

Date: _____

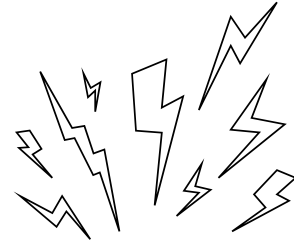
CALUMBRA'S ORIGIN STORY: STORY STRUCTURE ANALYSIS

Directions: The Weaver tells Calumbra's backstory as a 'once upon a time' story inside the main story. Map it onto the narrative arc below.



Rising Action:

What choices did the author make? How did Calumbra change?



Climax:

What happened when Calumbra became too powerful?

Conflict

What problem arose? What did the author fear?

Consequence:

What resulted? How does this connect to what is happening now?

Exposition

Who was the author? What was his life like?



This is a 'story within a story' (a nested narrative). Why might the writers have chosen to tell Calumbra's origin through the Weaver's retelling rather than showing it directly?

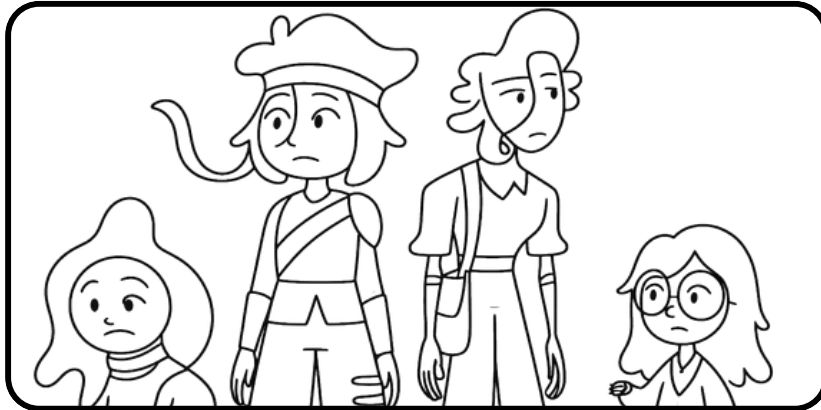


Name: _____

Date: _____

VOCABULARY IN CONTEXT

Directions: Use context clues from the episode to define each word. Then use it in your own sentence that shows you understand the meaning.



1. unravel

From the episode: *'But now, thanks to him, it unravels before my very eyes.'*

My definition:

My sentence:

2. parasite

From the episode: *'A creature not of one story, but many. A parasite of imagination itself.'*

My definition:

My sentence:

3. essence

From the episode: *'Your essence is the key.'*

My definition:

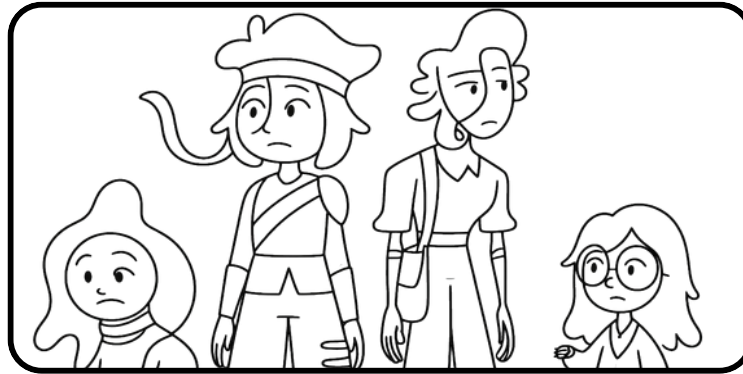
My sentence:

Name: _____

Date: _____

VOCABULARY IN CONTEXT

Directions: Use context clues from the episode to define each word. Then use it in your own sentence that shows you understand the meaning.



4. tapestry

From the episode: *'This archive was built to weave meaning from chaos. A living tapestry of unfinished tales.'*

My definition:

My sentence:

5. pompous

From the episode: *'He was pompous and proud, believing his writing to be superior to all others.'*

My definition:

My sentence:

6. renown

From the episode: *'An author of great renown had a story accepted into the world book.'*

My definition:

My sentence:

Name: _____

Date: _____

SYMBOLISM TRACKER

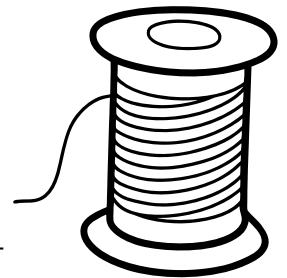
Directions: A symbol is an object or image that represents something beyond its literal meaning. Analyze three symbols from the episode below.

Symbol 1: The Weaver's Loom and Tapestry

The Weaver weaves a tapestry made of unfinished stories. What does weaving represent? What does a tapestry of stories say about how narratives are connected?

What this symbol represents:

Why the writers chose this specific image:

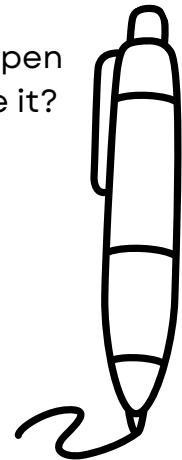


Symbol 2: The Broken Pen

The Inklings Society broke the author's pen to stop him. What does a pen represent for a writer? What were they really doing when they broke it?

What this symbol represents:

Why the writers chose this specific image:

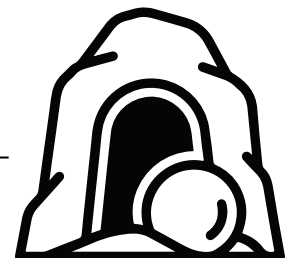


Symbol 3: The Archive Unraveling

The Archive, a place of order and meaning, is falling apart because of Calumbra. What real-world idea might this represent?

What this symbol represents:

Why the writers chose this specific image:



Name: _____

Date: _____

CONFLICT ANALYSIS

Directions: Stories often have multiple conflicts operating at the same time. Identify and analyze each type of conflict in this episode.

CHARACTER VS. CHARACTER

Who is in conflict and what are they fighting over?

CHARACTER VS. SELF

Which character has an internal conflict? What is their internal struggle?

CHARACTER VS. SOCIETY

How do characters conflict with a system or institution in this episode? Think about both the Inkompleses and the author.

Which conflict do you think is the MAIN conflict of this episode? Defend your choice with evidence.



Name: _____

Date: _____

THE DANGER OF PERFECTIONISM

Directions: The author who created Calumbra destroyed everything because he could not handle criticism and became obsessed with being perfect. Explore the difference between healthy growth and destructive perfectionism.



In your own words, describe what the author did and what drove him to it:

What is the difference between wanting to improve at something and being destructively obsessed with perfection?



HEALTHY: Wanting to Grow



DESTRUCTIVE: Obsessed with Perfection

Have you ever felt pressure to be perfect at something? What was healthy about it, and what was unhealthy?

Name: _____

Date: _____

UNDERSTANDING VS. EXCUSING: ROUND 2

Directions: In Episode 4, you thought about whether understanding Calumbra means excusing him. Now you know his origin story. Apply that same thinking to the author who created him.



Briefly describe what happened to the author and why he made the choices he did:

Does knowing the full story change how you feel about the author? Why or why not?

What is the difference between understanding someone's pain and excusing the harm they caused?

Both the author AND Calumbra caused harm. How is each one's situation different? Who, if anyone, is most responsible?

Name: _____

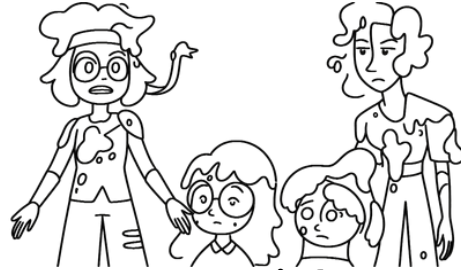
Date: _____

TRUSTING THE WEAVER

Directions: The Weaver tells the Inkompletes what they need to know and sends them off without explaining everything. Think critically about what makes someone, or something, trustworthy.

List three things the Weaver did or said in this episode that suggest she IS trustworthy:

- ① _____
- ② _____
- ③ _____



List one thing that might make you question whether the Weaver is fully trustworthy:

The Weaver is cold, abrupt, and does not explain everything. Does that mean she cannot be trusted? What is the difference between being warm and being trustworthy?

Think of a time you had to trust someone without full information. What made you decide whether to trust them or not?

Name: _____

Date: _____

WHY STORIES MATTER

Directions: The episode's central stakes are the destruction of all stories. This is the most serious threat of the series. Think carefully about what that would mean.

What would the world actually lose if all stories disappeared? Go beyond the obvious. Think about empathy, identity, cultural memory, and values.

What story has mattered most in your life? It could be a book, film, show, or game. Why did it matter?

The Weaver says the Archive was built to 'weave meaning from chaos.' What does that phrase mean to you? How do stories create meaning?



Name: _____

Date: _____

ARGUMENTATIVE WRITING: WHO IS MOST RESPONSIBLE?

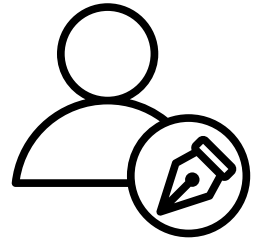
Directions: The episode's central stakes are the destruction of all stories. This is the most serious threat of the series. Think carefully about what that would mean.

Step 1: Choose your position (circle one):

THE AUTHOR is
most responsible

THE INKLING
SOCIETY is most
responsible

CALUMBRA
is most
responsible



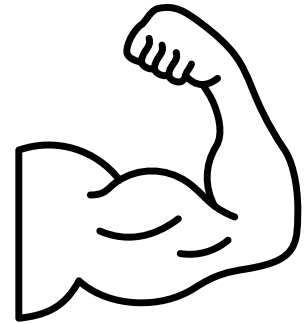
Step 2: Write your claim (a clear, arguable statement of your position):

Step 3: List your three strongest pieces of evidence:

1

2

3



Step 4: What is the strongest argument AGAINST your position? (counterargument)

Step 5: How do you respond to that counterargument?

Step 6: Write your conclusion. Restate your claim in a new way and explain why it matters.

Name: _____

Date: _____

CHARACTER MOTIVATION MAP: THE AUTHOR

Directions: Map the author's arc from the Weaver's story. Then answer the reflection question at the end.

What the author wanted	
What he feared	
What he chose to do	
What Calumbra became as a result	
What the Inklings Society did	
What the author lost in the end	



At what point in the author's story could he have made a different choice? What was that moment, and what could he have done instead?

Name: _____

Date: _____

TWO VOICES: WHO IS WATCHING?

Directions: The episode opens with two unknown voices discussing Smudge and Calumbra from somewhere outside the main story. Analyze what we can learn from this scene.



What do the two voices say? Write what you remember of the dialogue:

What specific words or phrases suggest these characters know Smudge? What does their language reveal about their feelings toward Smudge?

Who do you think these characters are? Develop a theory and support it with at least two pieces of evidence from the scene or episode:

Why might the writers have chosen to open this episode with characters watching from outside the story? What effect does it have on the audience?

Name: _____

Date: _____

THEME ESSAY PLANNING

Directions: Analyze how one theme develops through Episode 5 (and optionally Episode 4). Choose your theme, plan your essay, and write it on separate paper or in the space below.

Step 1: Choose your theme (circle one):

- The cost of perfectionism
- The power and fragility of stories
- Sacrifice and friendship
- Identity under pressure



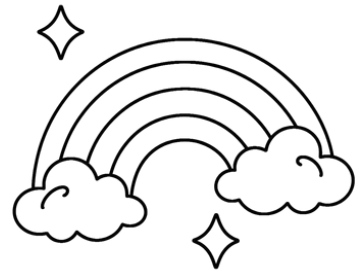
Step 2: Write your thesis (a specific, arguable claim about how this theme is developed):

Step 3: List three specific examples from the episode(s) that develop this theme:

1

2

3



Step 4: For each example, what does it MEAN? (Analysis, not just summary)

Step 5: What is the larger relevance of this theme? Why does it matter beyond just this story?

Name: _____

Date: _____

WRITING CHOICE BOARD

Directions: Choose ONE writing prompt from the board below. Write on a separate piece of paper or digitally. Each piece should be at least 500 words. Use strong writing techniques: specific details, character voice, and precise language.

<p>Draw and Label</p> <p>Retell the scene where the Weaver reveals Calumbra's origin story from Calumbra's point of view. What is he feeling as he learns they know his secret? What does he plan to do next?</p>	<p>Missing Scene</p> <p>Write the scene that happened AFTER the episode ends. The mysterious figure has just arrived. What do they say? What do they want? Write 400-600 words maintaining character voice and world rules.</p>	<p>Character Analysis Essay</p> <p>Write an analytical essay examining the Weaver's character. Is she trustworthy? What are her motivations? Support your analysis with specific evidence from the episode.</p>
<p>Psychological Thriller</p> <p>Expand the Weaver's retelling of Calumbra's origin story into a full short story. Show the author's descent into obsession. Build suspense through pacing, word choice, and atmosphere.</p>	<p>World-Building Article</p> <p>Write an informational article for new visitors to the Unfiniverse about the Archive. Describe its history, purpose, how it works, dangers, and current state. Use descriptive language and organize with headers.</p>	<p>Dialogue-Driven Scene</p> <p>Write a conversation between Smudge and one of the two unknown voices from the opening. How did they find each other? What does the voice know? What do they choose to share or withhold?</p>
<p>Backstory Narrative</p> <p>Write the full story of how the Archive was built. Who built it? Why? What was the original plan? How did the Weaver come to guard it? Maintain consistency with what we know from the episode.</p>	<p>Sequel Episode</p> <p>Write the opening scene of Episode 6. The Inkompletes have met the mysterious figure. Introduce a new conflict, develop character relationships, and end on a moment of tension or surprise.</p>	<p>Thematic Essay</p> <p>Analyze the theme of 'the danger of perfectionism' across Episodes 4 and 5. How is it developed? What message does it convey? Support your argument with specific evidence and explain its real-world relevance.</p>

I chose this prompt: _____

Before you write, plan here:
